



# GAT MONTHLY MEMBERSHIP PROGRESS REPORT

Results as of: 1/31/2024

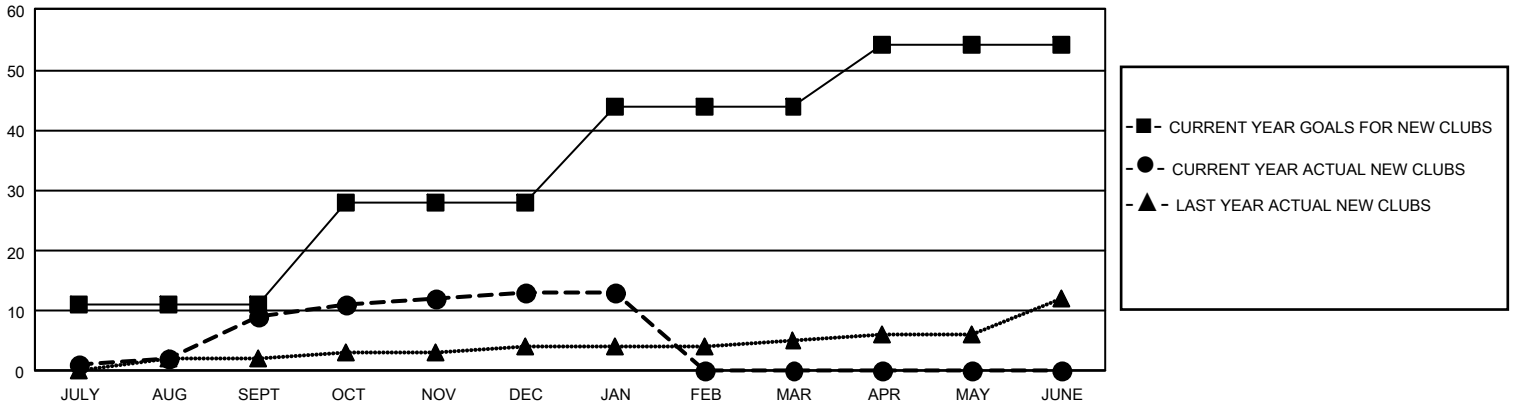
## GMT Constitutional Area 1, Group A

REPORT DOES NOT INCLUDE CLUBS IN UNDISTRICTED AREAS.

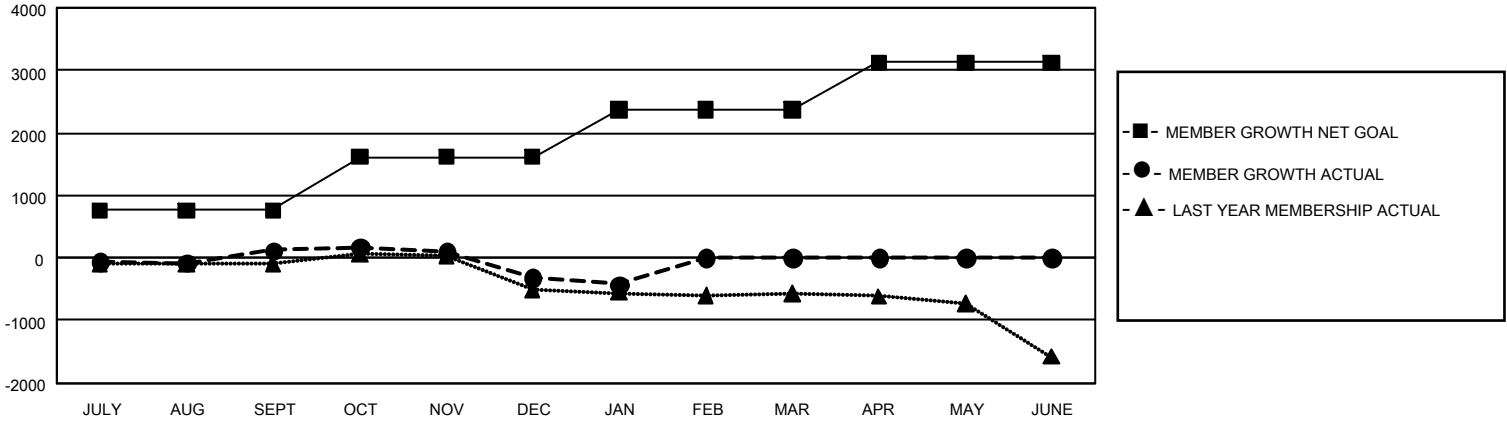
Clubs			
RESULTS FOR 2023-2024			
QUARTER	NEW CLUB GOAL	NEW CLUBS	DROPPED CLUBS
JULY/AUG/SEPT	33	9	11
OCT/NOV/DEC	51	4	16
JAN/FEB/MAR	48	0	3
APR/MAY/JUNE	30	0	0

Members			
RESULTS FOR 2023-2024			
QUARTER	MEMBER GROWTH NET GOAL	MEMBER GROWTH ACTUAL	DROPPED MEMBERS ACTUAL (including transfers)
JULY/AUG/SEPT	765	1,569	1,272
OCT/NOV/DEC	850	1,095	1,444
JAN/FEB/MAR	748	347	425
APR/MAY/JUNE	763	0	0

GOALS AND ACTUAL NEW CLUBS CUMULATIVE



GOALS AND ACTUAL MEMBERS CUMULATIVE



DROPPED CLUBS: 30	706 CLUBS OF 1,418 ADDED 1 OR MORE NEW MEMBERS	<u>GENDER DISTRIBUTION</u>	
	<u>DROPPED MEMBERS</u> DECEASED 288 CLUB CANCELLED 123 OTHER 2,728 TOTAL 3,139	<a href="#">CLICK HERE FOR CUMULATIVE MEMBERSHIP DATA</a>	MALE 23,553 (63.43%)
FEMALE 13,563 (36.52%)			
		NON BINARY 6 (0.02%)	
		PREFER NOT TO ANSWER 12 (0.03%)	
		TOTAL FAMILY UNIT MEMBERS 5,988	
		FAMILY MEMBERS PAYING HALF DUES 3,063	